

**Distortion Rate For Pre Print
Plates For .107 Is 97.24%**

**Distortion Rate For Tail Print
Plates For .067 Is 98.32%**



DESIGN GROUP:
Rio Bravo Shopper Series

JV Slit Jr Cargo
18 x 7 x 16 3/4

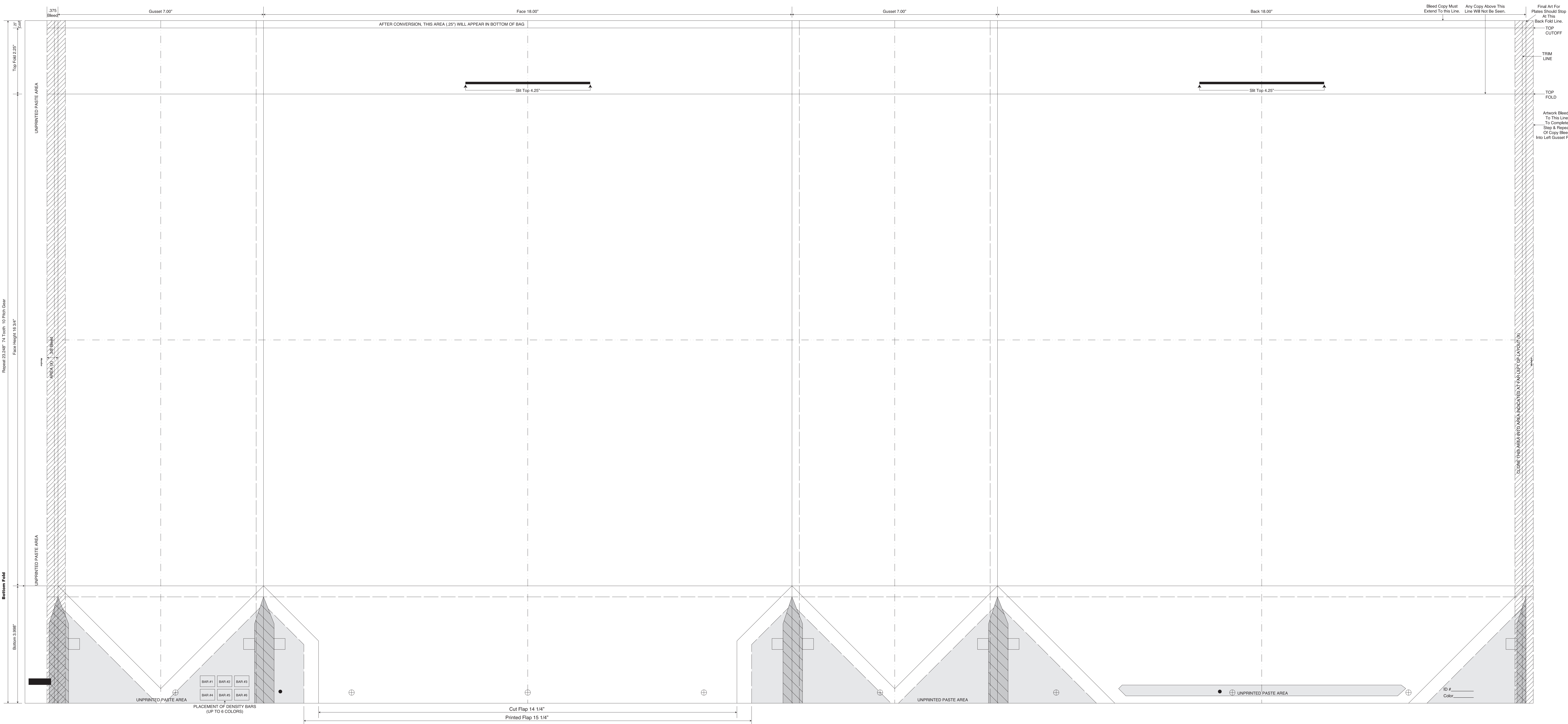
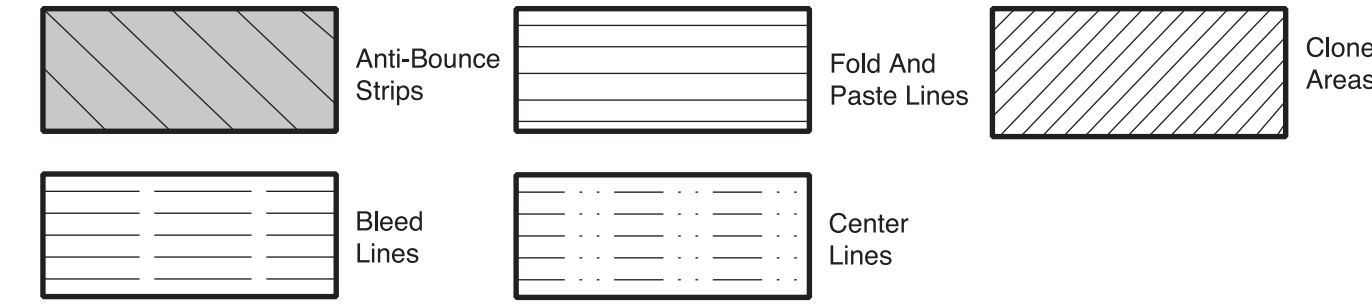
DATE: 2/10/16 SCALE: FULL

PLEASE NOTE: This proof is for copy, content, and position approval only. **This proof is not for actual color or paper substrate used to produce your order.** Carefully check all traps (overlap of color) punctuation, spelling, copy and elements. Please use attached approval letter for signed approval. Approval letter, proof and ink roll outs must be returned to produce your order.

BORDER DESIGNS
Because Of Machine Movement In Bag Conversion, Copy Should Be Placed At Least 1/4" From Fold Lines Or Edges. In The Top Area, Use 1/2" Bleed. Border Designs Should Be Kept 1/2" From Fold Edges, Top Cutoff And Bottom Fold.

Full Panel Print Must Bleed Into Top & Bottom Of Bag, Which Is Indicated On Template

Fill All 5 Anti-Bounce Area With 40% Screen In All Colors Containing Screens



Regard 23.248" 7.1 Tooth 10 Pitch Gear
Face Height 18.34"

Bottom Fold

Bottom 3.896"

UNPRINTED PASTE AREA
PLACEMENT OF DENSITY BARS (UP TO 6 COLORS)

Cut Flap 14 1/4"
Printed Flap 15 1/4"

UNPRINTED PASTE AREA

ID # _____
Color _____

Final Art For Plates Should Stop At This Back Fold Line. TOP CUTOFF
TRIM LINE
TOP FOLD
Work Bleeds To This Line To Complete Step & Repeat Of Copy Bleed Into Left Gusset Panel
Clone This Area To Area Indicated To Right Of Bottom