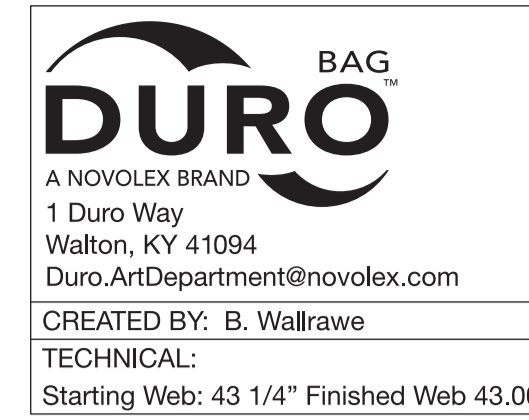


**Distortion Rate For Pre Print  
Plates For .107 Is 97.04%**

**Distortion Rate For Tail Print  
Plates For .067 Is 98.20%**



DESIGN GROUP:  
Shopper Series

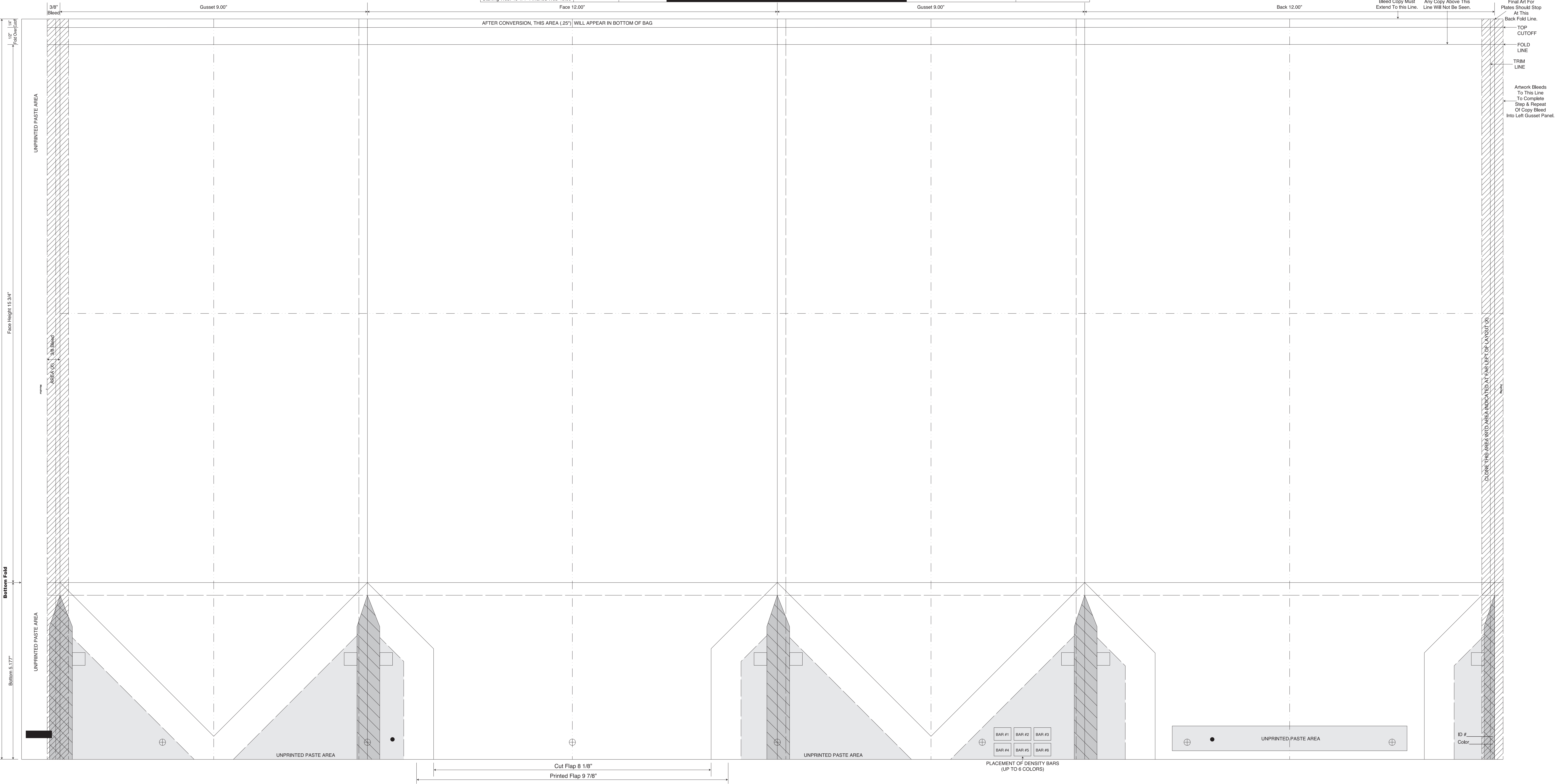
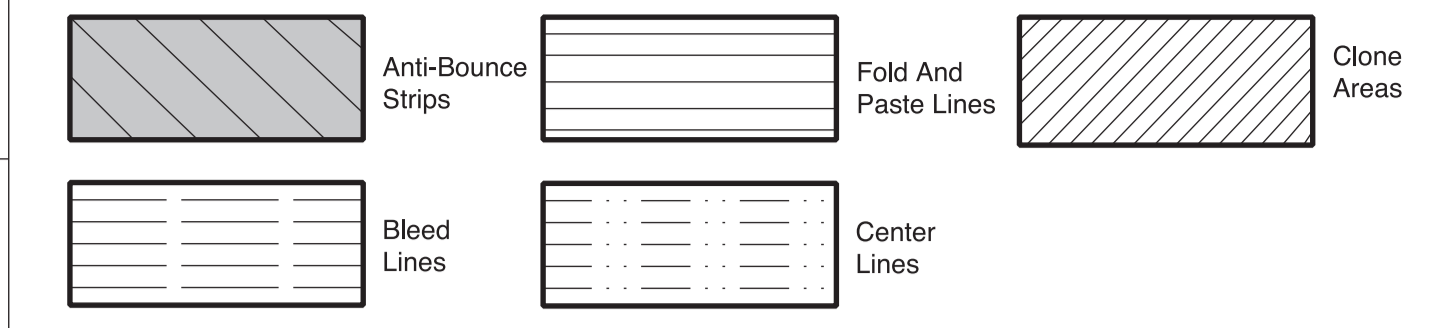
Ultra Regal  
12 x 9 x 15 3/4

DATE: 2/10/16 SCALE: FULL

**PLEASE NOTE: This proof is for copy, content, and position approval only. This proof is not for actual color or paper substrate used to produce your order. Carefully check all traps (overlap of color) punctuation, spelling, copy and elements. Please use attached approval letter for signed approval. Approval letter, proof and ink roll outs must be returned to produce your order.**

**BORDER DESIGNS**  
Because Of Machine Movement In Bag Conversion, Copy Should Be Placed At Least 1/4" From Fold Lines Or Edges. In The Top Area, Use 1/2" Bleed. Border Designs Should Be Kept 1/2" From Fold Edges, Top Cutoff And Bottom Fold.  
Full Panel Print Must Bleed Into Top & Bottom Of Bag, Which Is Indicated On Template

Fill All 5 Anti-Bounce Area With 40% Screen In All Colors Containing Screens



Repeat: 21.677" 69 Tooth, 10 Pitch Gear  
Face Height 15.34"

Bottom Fold

Bottom 5.177"

Final Art For Plates Should Stop At This Back Fold Line.  
TOP CUTOFF  
FOLD LINE  
TRIM LINE  
Artwork Bleeds To This Line To Complete Step & Repeat Of Copy Bleed Into Left Gusset Panel.

CLONE THE AREA INTO AREA INDICATED AT FAR LEFT OF LAYOUT (X)

ID #  
Color

PLACEMENT OF DENSITY BARS  
(UP TO 6 COLORS)

Cut Flap 8 1/8"  
Printed Flap 9 7/8"

UNPRINTED PASTE AREA

UNPRINTED PASTE AREA

UNPRINTED PASTE AREA