

**Distortion Rate For Pre Print Plates For .107 Is 97.51%**

**Distortion Rate For Tail Print Plates For .067 Is 98.48%**

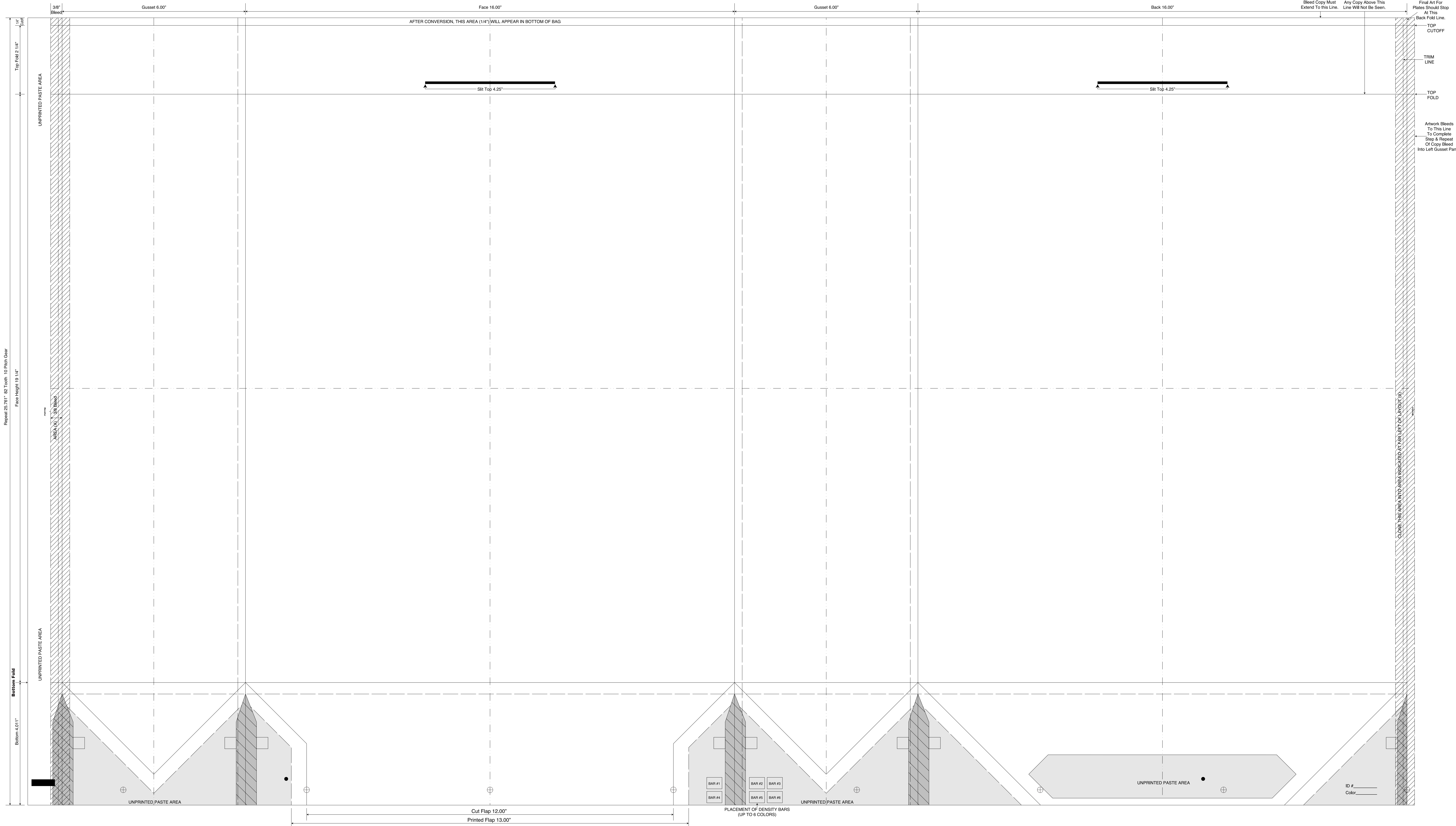
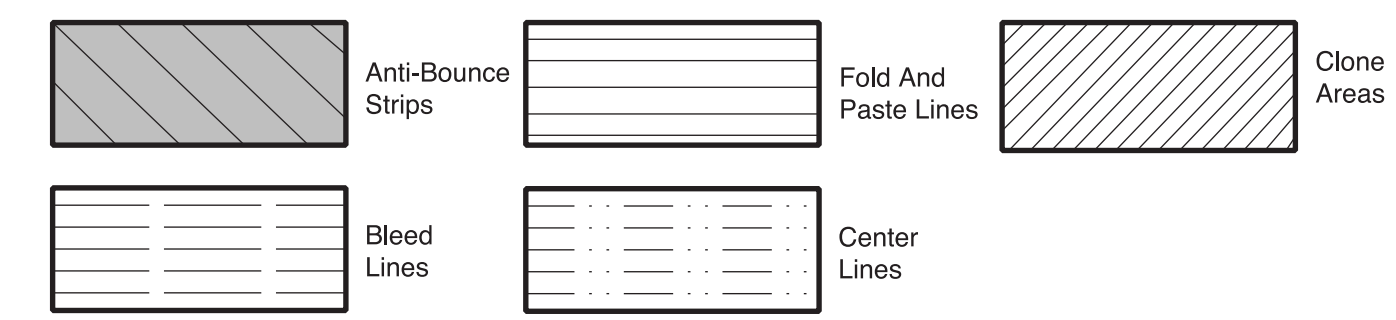
**DURO** BAG  
 A NOVOLEX BRAND  
 1 Duro Way  
 Walton, KY 41094  
 DuroArtDepartment@novolex.com  
 CREATED BY: B. Wallrawe  
 TECHNICAL:  
 Starting Web: 49 1.4" Finished Web 45.00"

DESIGN GROUP:  
 Shopper Series  
**JV Slit Top Towner**  
 16 x 6 x 19 1/4  
 DATE: 2/10/16 SCALE: FULL

**PLEASE NOTE:** This proof is for copy, content, and position approval only. This proof is not for actual color or paper substrate used to produce your order. Carefully check all traps (overlap of color) punctuation, spelling, copy and elements. Please use attached approval letter for signed approval. Approval letter, proof and ink roll outs must be returned to produce your order.

**BORDER DESIGNS**  
 Because Of Machine Movement In Bag Conversion, Copy Should Be Placed At Least 1/4" From Fold Lines Or Edges. In The Top Area, Use 1/2" Bleed. Border Designs Should Be Kept 1/2" From Fold Edges, Top Cutoff And Bottom Fold.  
 Full Panel Print Must Bleed Into Top & Bottom Of Bag, Which Is Indicated On Template

Fill All 5 Anti-Bounce Area With 40% Screen In All Colors Containing Screens



Repeat 25.761" 82 Tooth 10 Pitch Clear  
 Face Height 19 1/4"

Final Art For Plates Should Stop At This Back Fold Line.  
 TOP CUTOFF  
 TRIM LINE  
 TOP FOLD  
 Artwork Bleeds To This Line To Complete Step & Repeat Of Copy Bleed Into Left Gusset Panel.

BAR #1  
 BAR #2  
 BAR #3  
 BAR #4  
 BAR #5  
 BAR #6  
 PLACEMENT OF DENSITY BARS (UP TO 6 COLORS)

Cut Flap 12.00"  
 Printed Flap 13.00"

ID # \_\_\_\_\_  
 Color \_\_\_\_\_