

**Distortion Rate For Pre Print
Plates For .107 Is 96.70%**

**Distortion Rate For Tail Print
Plates For .067 Is 97.99%**

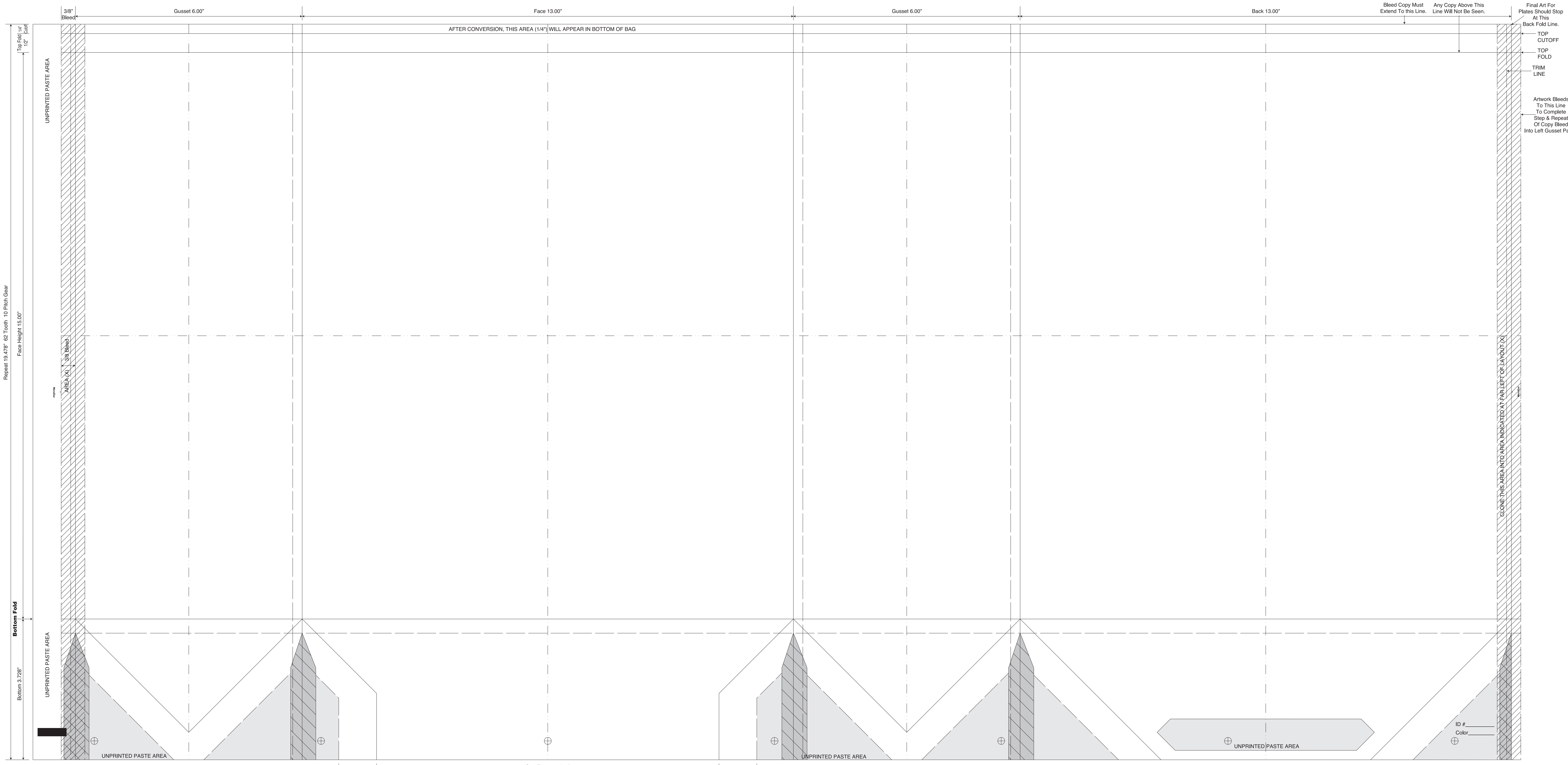
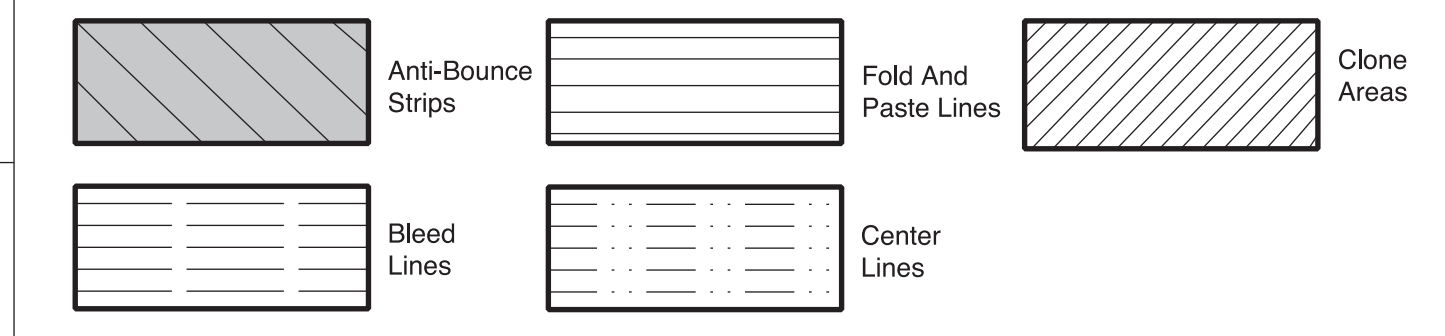
BAG
DURO
A NOVOLIX BRAND
1 Duro Way
Walton, KY 41094
Duro.ArtDepartment@novolix.com
CREATED BY: B. Wallrawe
TECHNICAL:
Starting Web: 39 1/4" Finished Web 39.00"

DESIGN GROUP:
Shopper Series
Ultra Modular Traveler
13 x 6 x 15
DATE: 2/10/16 SCALE: FULL

PLEASE NOTE: This proof is for copy, content, and position approval only. This proof is not for actual color or paper substrate used to produce your order. Carefully check all traps (overlap of color) punctuation, spelling, copy and elements. Please use attached approval letter for signed approval. Approval letter, proof and ink roll outs must be returned to produce your order.

BORDER DESIGNS
Because Of Machine Movement In Bag Conversion, Copy Should Be Placed At Least 1/4" From Fold Lines Or Edges. In The Top Area, Use 1/2" Bleed. Border Designs Should Be Kept 1/2" From Fold Edges, Top Cutoff And Bottom Fold.
Full Panel Print Must Bleed Into Top & Bottom Of Bag, Which Is Indicated On Template

Fill All 5 Anti-Bounce Area With 40% Screen In All Colors Containing Screens



Repeat 19.478" 62 Tooth 10 Pitch Gear
Face Height 15.00"

Bottom Fold
Bottom 5.728"

Bleed Copy Must Extend To this Line.
Any Copy Above This Line Will Not Be Seen.
Final Art For Plates Should Stop At This Back Fold Line.
TOP CUTOFF
TOP FOLD
TRIM LINE
Artwork Bleeds To This Line To Complete Step & Repeat Of Copy Bleed Into Left Gusset Panel.

CLONE THIS AREA INTO AREA INDICATED AT FAR LEFT OF LAYOUT (X)

Cut Flap 9 1/16"
Printed Flap 11 1/16"
This Proof is For Copy, Elements And Position Only. NOT FOR COLOR APPROVAL.

ID #
Color